

<b>Item</b>	<b>Fiber Media Converter</b>
<b>Model No.</b>	<b>AOM-1100M</b>
<b>Description</b>	<b>10/100Base-TX to 100Base-FX</b>
	

## Overview

AOM-1100M Micro Serial **10/100M Fiber Media Converter** translates the signal from a twist-pair 10/100Base-TX cable to 100Base-FX fiber optic cable, extends data transmission distance from 100m via copper cables to 100km by fiber optic cable

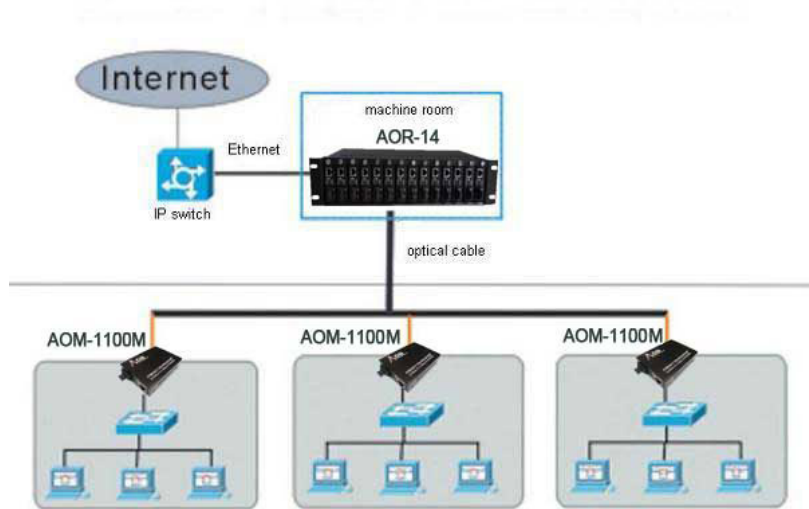
## Features

- 10/100Mbps auto-sensed, easily upgrade
- Full-duplex and half-duplex auto-sensed
- MDI/MDI-X Auto Negotiation
- 10/100Mbps store-and-forward
- 100Mbps cut-through transmission
- Packet size up to 1552 bytes
- Supporting QoS packets
- Support flow control and reduce broadcast packets
- Support 5V-12V DC Power Input
- Extremely low power consumption, low heat, stable performance

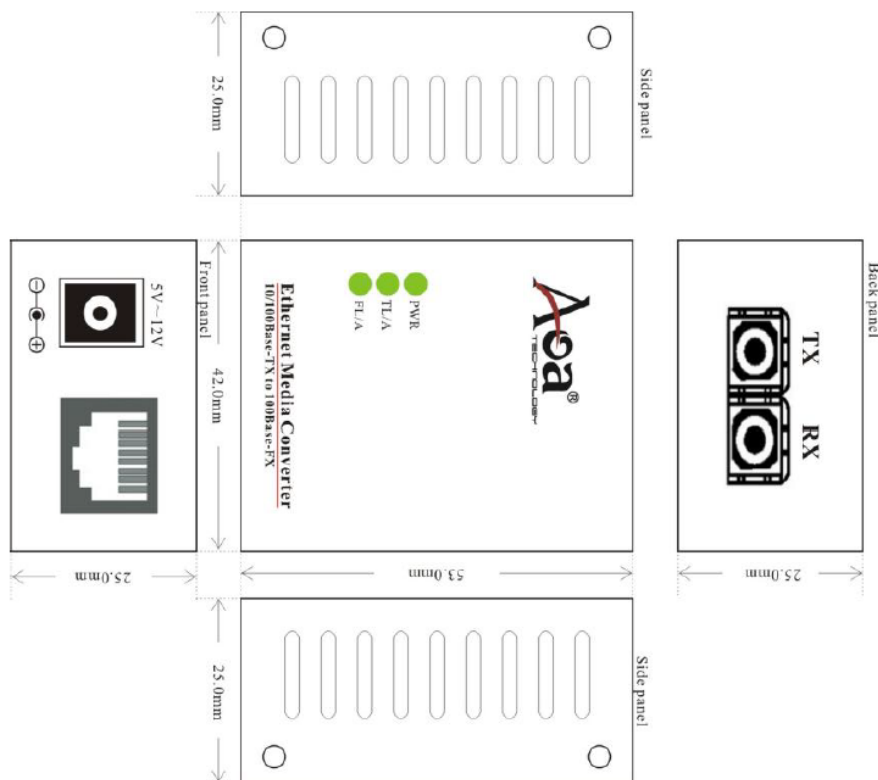
## Application

1. Network Communication
2. FTTH / FTTB / FTTx
3. ISP Backhaul Networking

### media converter solution



## Mechanical Dimensions



**Technical Indexes**

Standard	IEEE802.3 10Base-T Ethernet, IEEE802.3u 100Base-TX/FX Fast Ethernet IEEE802.3 Flow control, IEEE802.1 p Qos IEEE802.1d Spanning Tree
Data Rate	Copper: 10/100M; Fiber: 155M
Flow control	Full duplex: flow control; Half duplex: back pressure
Copper Port	No.s of Copper Port: 1 Connector: RJ45 Connector Distance:100m
Fiber Port	No.s of Fiber Port: 1 Connector: SC as default, FC/ST optional Wavelength: MMF 850nm or 1310nm, SMF: 1310nm, Bi-di 1310/1550nm Distance: MMF 2Km, SMF 20/40/80/100/120Km, Bi-di 20/40/80/100Km
Power supply	Working power: DC5V 1A AC Power Supply: 100V~ AC240V 50/60Hz Or DC Power Supply
Power consumption	<2W
Environment	Operating temperature : -10~55°C Storage Temperature: -40~70°C Relative Humidity: 5% to 95% non-condensing
Dimensions	55mmx40mmx25mm
Gross Weight	Netl : 0.05kg
Color	Meta/ black optional



AOA Technology Co., Limited.  
深圳市奥昇光电技术有限公司

Actuating Optical Advances

### Order Information

Model No.	Data Rate	Fiber Mode	Wavelength	Fiber Connector	Distance	Power Supply
AOM-1100M-M02-EA	10/100M	MMF	1310nm	SC	2km	Ex.AC220V
AOM-1100M-S20-EA	10/100M	SMF	1310nm	SC	20km	Ex.AC220V
AOM-1100M-S40-EA	10/100M	SMF	1310nm	SC	40km	Ex.AC220V
AOM-1100M-A20-EA	10/100M	Bi-di	TX1310/RX1550nm	SC	20km	Ex.AC220V
AOM-1100M-B20-EA	10/100M	Bi-di	TX1550/RX1310nm	SC	20km	Ex.AC220V
AOM-1100M-A40-EA	10/100M	Bi-di	TX1310/RX1550nm	SC	40km	Ex.AC220V
AOM-1100M-B40-EA	10/100M	Bi-di	TX1550/RX1310nm	SC	40km	Ex.AC220V