



Item	Fiber Media Converter
Model NO.	AOM-3100
Description	10/100/1000Base-T to 1000Base-FX
	
MMF/SMF	Bi-di

Overview

AOM-3100 Serial **10/100/1000M Fiber Media Converter** translates the signal from a twist-pair 10/100/1000Base-TX cable to 1000Base-FX fiber optic cable, extends data transmission distance from 100m via copper cables to 100km by fiber optic cable

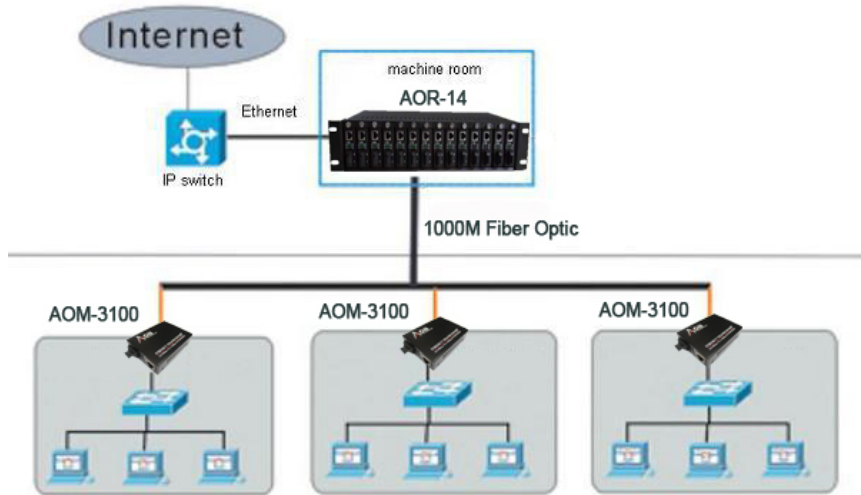
Features

- 10/100/1000Mbps auto-sensed, easily upgrade
- Full-duplex and half-duplex auto-sensed
- MDI/MDI-X Auto Negotiation
- 10/100/1000Mbps store-and-forward
- 1000Mbps cut-through transmission
- Packet size up to 1518 bytes
- **Support 9K Jumbo Frame**
- Supporting VLAN / VoIP / QoS packets
- Support flow control and reduce broadcast packets
- Supporting STP to form a redundant network
- Extremely low power consumption, low heat, stable performance
- Providing Desktop, Wall-mounted, Chassis, DIN-rail installation

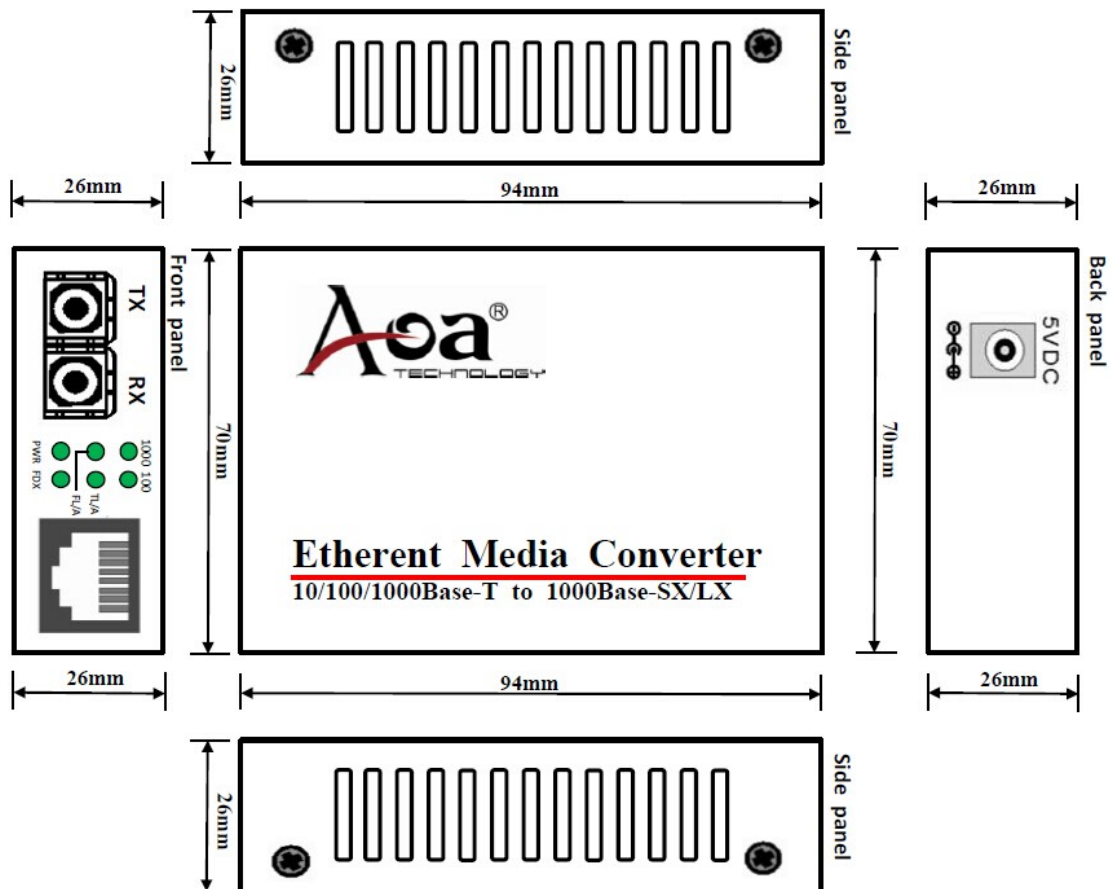
Application

- Network Communication
- FTTH / FTTB / FTTx
- ISP Backhaul Networking

media converter solution



Mechanical Dimensions



Technical Indexes

Standard	IEEE 802.3, IEEE 802.3u, IEEE 802.3ab, IEEE 802.3z
Data Rate	Copper: 10/100/1000M; Fiber: 1.25G
Flow control	Full duplex: flow control; Half duplex: back pressure
Copper Port	No.s of Copper Port: 1 Connector: RJ45 Connector Distance:100m
Fiber Port	No.s of Fiber Port: 1 Connector: SC as default, FC/ST optional Wavelength: MMF 850nm, SMF: 1310nm, Bi-di 1310/1550nm Distance: MMF 550Km, SMF 20/40/80/100/120Km, Bi-di 20/40/80/100Km
LED indicators	PWR (power supply); FL/A (optical link/action) FDX (FX full duplex), TL/A (twisted pairs link/action) 100 (100M transmission rate of twisted pairs), 1000 (100M transmission rate of twisted pairs)
Power supply	Working power: DC5V 1A AC Power Supply: 100V~ AC240V to 5V1A Or DC Power Supply: -36~-72V to 5V1A External / Internal Power Supply Optional
Power consumption	<3W
Environment	Operating temperature : -10~55°C Storage Temperature: -40~85°C Relative Humidity: 5% to 95% non-condensing
Dimensions	External: 94mmx70mm*26mm Internal: 140mmx110mmx30mm
Gross Weight	External : 0.4kg Internal: 0.5kg

Order Information

Model No.	Data Rate	Fiber Mode	Wavelength	Fiber Connector	Distance	Power Supply
AOM-3100-M05-EA	10/100/1000M	MMF	850nm	SC	550m	Ex.AC220V
AOM-3100-S20-EA	10/100/1000M	SMF	1310nm	SC	20km	Ex.AC220V
AOM-3100-S40-EA	10/100/1000M	SMF	1310nm	SC	40km	Ex.AC220V
AOM-3100-A20-EA	10/100/1000M	Bi-di	TX1310/RX1550nm	SC	20km	Ex.AC220V
AOM-3100-B20-EA	10/100/1000M	Bi-di	TX1550/RX1310nm	SC	20km	Ex.AC220V
AOM-3100-A40-EA	10/100/1000M	Bi-di	TX1310/RX1550nm	SC	40km	Ex.AC220V
AOM-3100-B40-EA	10/100/1000M	Bi-di	TX1550/RX1310nm	SC	40km	Ex.AC220V
AOM-3100-M05-ED	10/100/1000M	MMF	850nm	SC	550m	Ex.DC48V
AOM-3100-S20-ED	10/100/1000M	SMF	1310nm	SC	20km	Ex.DC48V
AOM-3100-S40-ED	10/100/1000M	SMF	1310nm	SC	40km	Ex.DC48V
AOM-3100-A20-ED	10/100/1000M	Bi-di	TX1310/RX1550nm	SC	20km	Ex.DC48V
AOM-3100-B20-ED	10/100/1000M	Bi-di	TX1550/RX1310nm	SC	20km	Ex.DC48V
AOM-3100-A40-ED	10/100/1000M	Bi-di	TX1310/RX1550nm	SC	40km	Ex.DC48V
AOM-3100-B40-ED	10/100/1000M	Bi-di	TX1550/RX1310nm	SC	40km	Ex.DC48V

Relative Product

16 Slot Chassis System for Card Type						
AOR-16-2A	16 Slot Chassis with double AC220V Power Supply, for Card Type					
AOR-16-2D	16 Slot Chassis with double DC48V Power Supply, for Card Type					
AOM-3100-M05-C	10/100M	MMF	1310nm	SC	2km	Card
AOM-3100-S20-C	10/100M	SMF	1310nm	SC	20km	Card
AOM-3100-A20-C	10/100M	Bi-di	TX1310/RX1550nm	SC	20km	Card
AOM-3100-B20-C	10/100M	Bi-di	TX1550/RX1310nm	SC	20km	Card
14 Slot Chassis System For Standalone Type						
AOR-14-2A	14 Slot Chassis with double AC220V Power Supply, for standalone type					
AOR-14-2D	14 Slot Chassis with double DC48V Power Supply, for standalone type					
AOM-3100-M02	10/100M	MMF	1310nm	SC	2km	Standalone
AOM-3100-S20	10/100M	SMF	1310nm	SC	20km	Standalone
AOM-3100-A20	10/100M	Bi-di	TX1310/RX1550nm	SC	20km	Standalone
AOM-3100-B20	10/100M	Bi-di	TX1550/RX1310nm	SC	20km	Standalone