

AOM-1302 10/100M 3-UTP+2-FX Port Media Converter Series

Overview

AOM-1302 series 3-UTP port & **two fiber port media converter**, 10/100M switch built in, can inter-convert 10Base-T and/or 100Base-TX twisted pair as well as, it can be configured with two optical modules (one of the conversion of single-mode and multi-mode). It extends the transmission distance of 2/20/40/60/80/100km

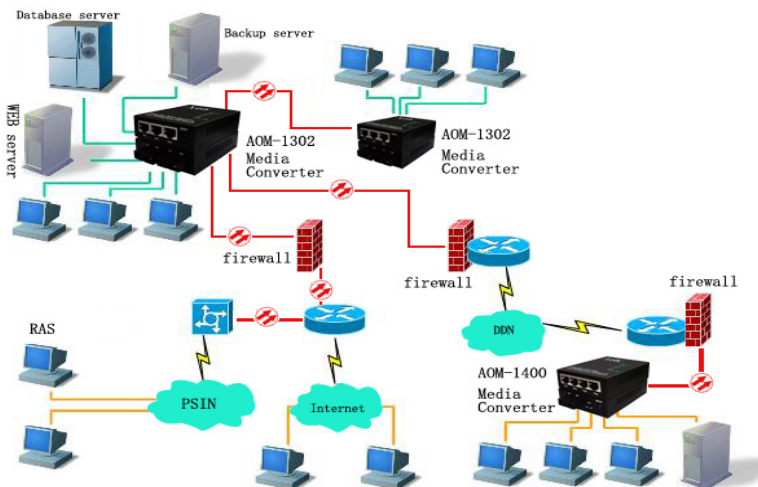


Features

- 10/100Mbps auto-sensed, facilitating network upgrade
- Easily build **fiber ring network**
- Built-in efficient switching core to implement flow control and reduce broadcast packets
- Providing Three respective 10M/100Mbps adaptive twisted pair switching ports to implement the backup of ports and the access of multiple users, Two optical ports to fulfill optical backup or SM/MM conversion
- Supporting full-duplex and half-duplex and its auto-sensed, Auto MDI/MDIX
- Supporting the transmission of extra-long packets up to 1518 bytes
- Supporting Quality of Service (QoS) and ensuring the transmission of VoIP packets
- Supporting STP to form a redundant network
- Low power consumption, low heat, reliable and stable performance, and long lifetime

Application

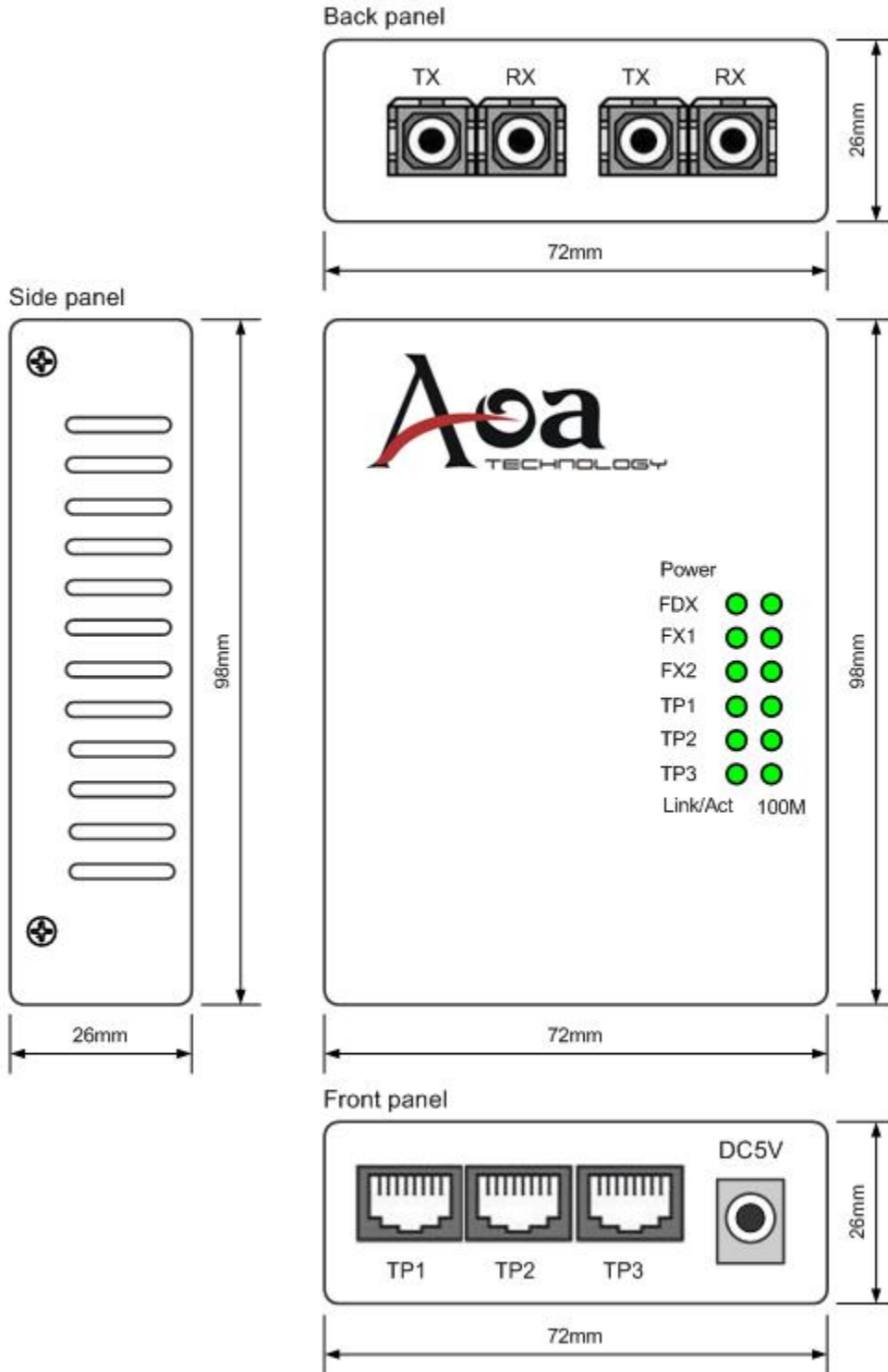
10/100Mbps fast optical Ethernet long-distance transmitting network



Technical Indexes

Parameter	Specifications
Access mode	10/100Mbps
Standard	IEEE802.3 10Base-T Ethernet, IEEE802.3u, 100Base-TX/FX Fast Ethernet, IEEE802.3x Flow control, IEEE802.1q VLAN, IEEE802.1p QoS, IEEE802.1d Spanning Tree
Wavelength	850nm/1310nm/1550nm
Transmission distance	multi-mode: 2 km; single-mode: 20~120km; Category-5 twisted pairs: 100m
Port	Three RJ45 ports: Connecting with STP/UTP category-5 twisted pairs Two optical port: MM: SC/ST (50, 62.5/125μm); SM: SC/FC (9/125μm)
Conversion means	Media conversion, store-and-forward
MAC address table	1 K
Buffer space	1Mbit
Flow control	Full duplex: flow control; half duplex: back pressure
Delay	9.6us
Error rate	<10 ⁻⁹
MTBF	100,000 hours
LED indicator	PWR (power supply); FX1/2 LINK/ACT (optical link/action) FX SPD (fiber 100M transmission rate) TP1/2/3 LINK/ACT (1/2/3 port twisted pair link action) TP1/2/3 (1/2/3 port twisted pair 100M transmission rate)
Power supply	DC5V 1A (external)
Power consumption	3.5W
Operating temperature	-10~55℃
Operating humidity	5%~90%
Maintaining temperature	-40~70℃
Maintaining humidity	5% ~ 90% non-condensing
Dimensions	98mm* 72mm * 26 mm(external power supply)

Mechanical Dimensions



Order Information

Model No.	Wavelength	2-FX Port	3-TX Port	Fiber model	Distance
AOM-1302-M02	850/1310nm	SC/ST/FC	RJ-45	MM, Dual-fiber	2km
AOM-1302-S20	1310nm FP	SC/ST/FC	RJ-45	SM, Dual -fiber	20km
AOM-1302-S40	1310nm FP	SC/ST/FC	RJ-45	SM, Dual-fiber	40km
AOM-1302-S60	1310nm FP	SC/ST/FC	RJ-45	SM, Dual-fiber	60km
AOM-1302-S80	1550nm DFB	SC/ST/FC	RJ-45	SM, Dual-fiber	80km
AOM-1302-S100	1550nm DFB	SC/ST/FC	RJ-45	SM, Dual-fiber	100km
AOM-1302-A20	TX1310/RX1550nm FP	SC/ST/FC	RJ-45	SM, Single-fiber	20km
AOM-1302-B20	RX1310/RX1550nm FP	SC/ST/FC	RJ-45	SM, Single-fiber	20km
AOM-1302-A40	TX1310/RX1550nm FP	SC/ST/FC	RJ-45	SM, Single-fiber	40km
AOM-1302-B40	RX1310/TX1550nm FP	SC/ST/FC	RJ-45	SM, Single-fiber	40km
AOM-1302-A60	TX1310/RX1550nm DFB	SC/ST/FC	RJ-45	SM, Single-fiber	60km
AOM-1302-B60	RX1310/TX1550nm DFB	SC/ST/FC	RJ-45	SM, Single-fiber	60km
AOM-1302-A80	TX1310/RX1550nm DFB	SC/ST/FC	RJ-45	SM, Single-fiber	80km
AOM-1302-B80	RX1310/TX1550nm DFB	SC/ST/FC	RJ-45	SM, Single-fiber	80km